

30/911

EH-100B16 NI-MH (SIZE): BUTTON CELL

Cell Dimension (With shrink sleeve)

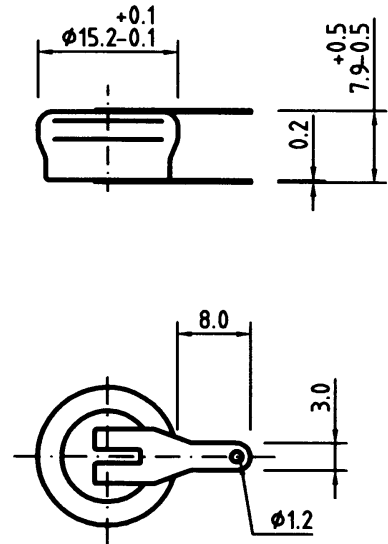
Diameter	15.5 ± 0.7 mm
Height	8 ± 1.0 mm
Approximate Weight	8 g

Specifications

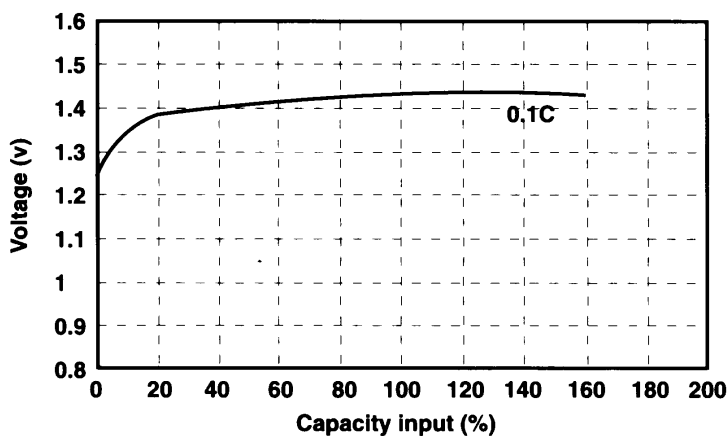
Nominal Voltage		1.2 V	
0.2C Discharge Capacity*	Typical **	105 mAh	
	Nominal	100 mAh	
Charge	Standard	10 mA for 14 to 16hr	
	Fast	20 mA for 7 - 8 hr	
Life Expectancy		500 cycles	
Operating Temperature	Charge	Standard	0°C to 40°C
		Fast	10°C to 30°C
	Discharge		-10°C to 40°C
	Storage	<6 months	0°C to 35°C
<2 months		0°C to 45°C	

* After charging for 16 hr. with 0.1 C

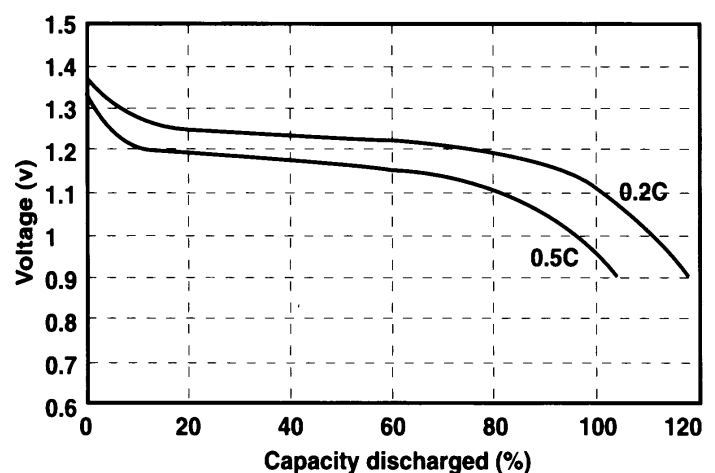
** Average capacity



Charging curve of single cell EH-100B16 at 0.1C charging rate



Discharge curves of single cell EH-100B16 at various discharge rates at room temperature.



30/912

EH-100B16 NI-MH (SIZE): BUTTON CELL

Cell Dimension (With shrink sleeve)

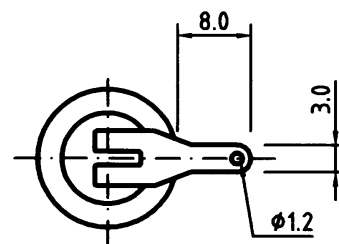
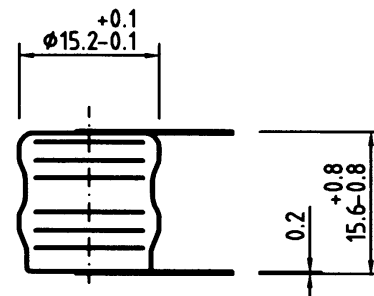
Diameter	15.5 ± 0.7 mm
Height	15.5 ± 1.0 mm
Approximate Weight	15 g

Specifications

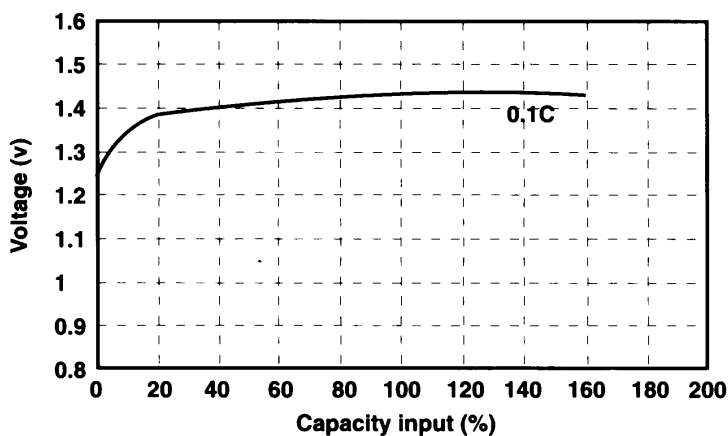
Nominal Voltage		2.4 V	
0.2C Discharge Capacity*	Typical **	105 mAh	
	Nominal	100 mAh	
Charge	Standard	10 mA for 14 to 16hr	
	Fast	20 mA for 7 - 8 hr	
Life Expectancy		500 cycles	
Operating Temperature	Charge	Standard	0°C to 40°C
		Fast	10°C to 30°C
	Discharge		-10°C to 40°C
	Storage	<6 months	0°C to 35°C
<2 months		0°C to 45°C	

* After charging for 16 hr. with 0.1 C

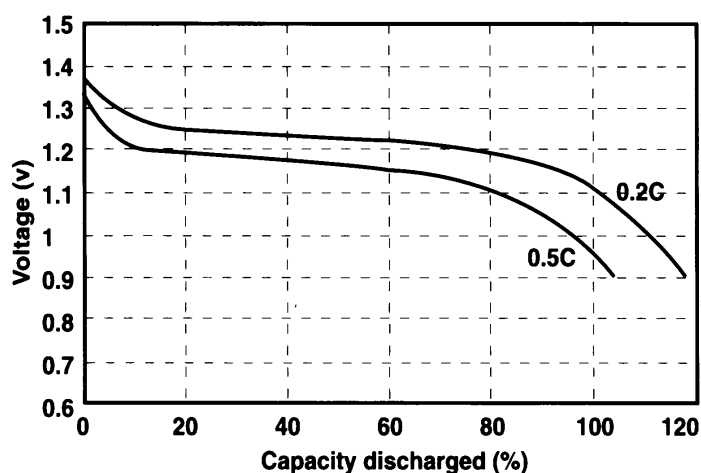
** Average capacity



Charging curve of single cell EH-100B16 at 0.1C charging rate



Discharge curves of single cell EH-100B16 at various discharge rates at room temperature.



30/913

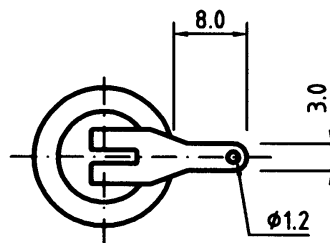
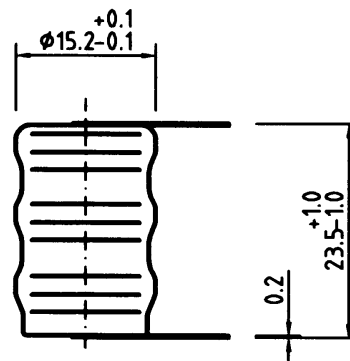
EH-100B16 NI-MH (SIZE): BUTTON CELL

Cell Dimension (With shrink sleeve)

Diameter	15.5 ± 0.7 mm
Height	23.5 ± 1.0 mm
Approximate Weight	22 g

Specifications

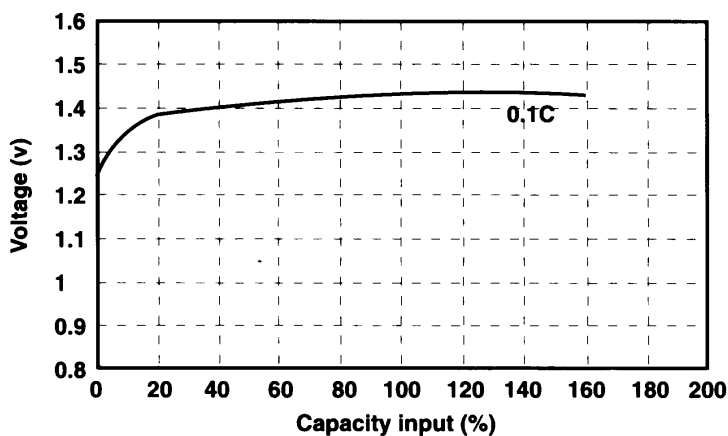
Nominal Voltage		3.6 V	
0.2C Discharge Capacity*	Typical **	105 mAh	
	Nominal	100 mAh	
Charge	Standard	10 mA for 14 to 16hr	
	Fast	20 mA for 7 - 8 hr	
Life Expectancy		500 cycles	
Operating Temperature	Charge	Standard	0°C to 40°C
		Fast	10°C to 30°C
	Discharge		-10°C to 40°C
	Storage	<6 months	0°C to 35°C
<2 months		0°C to 45°C	



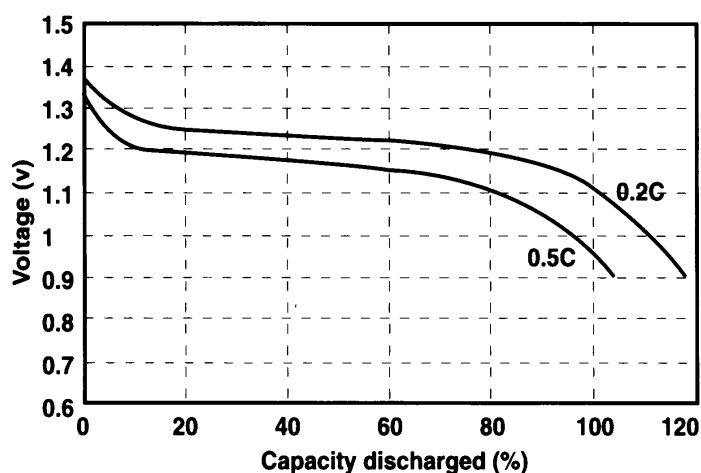
* After charging for 16 hr. with 0.1 C

** Average capacity

Charging curve of single cell EH-100B16 at 0.1C charging rate



Discharge curves of single cell EH-100B16 at various discharge rates at room temperature.



30/914

EH-100B16 NI-MH (SIZE): BUTTON CELL

Cell Dimension (With shrink sleeve)

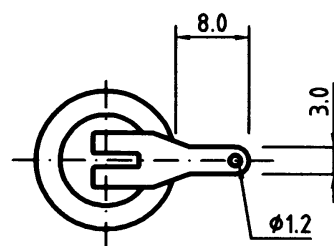
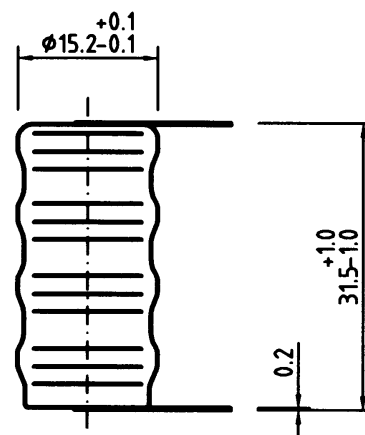
Diameter	15.5 ± 0.7 mm
Height	31.5 ± 1.0 mm
Approximate Weight	29 g

Specifications

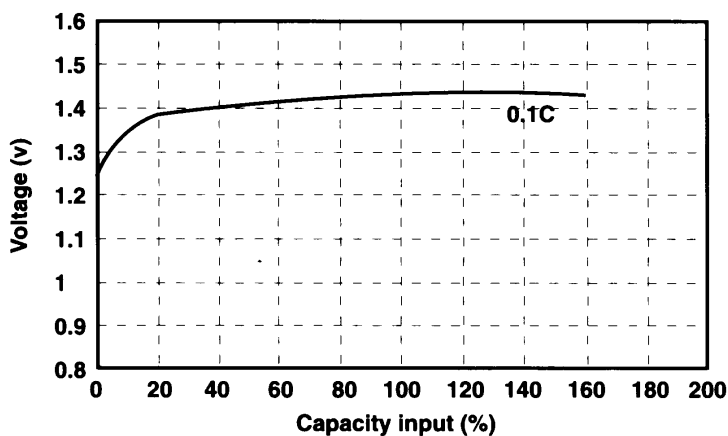
Nominal Voltage		4.8V	
0.2C Discharge Capacity*	Typical **	105 mAh	
	Nominal	100 mAh	
Charge	Standard	10 mA for 14 to 16hr	
	Fast	20 mA for 7 - 8 hr	
Life Expectancy		500 cycles	
Operating Temperature	Charge	Standard	0°C to 40°C
		Fast	10°C to 30°C
	Discharge		-10°C to 40°C
	Storage	<6 months	0°C to 35°C
<2 months		0°C to 45°C	

* After charging for 16 hr. with 0.1 C

** Average capacity



Charging curve of single cell EH-100B16 at 0.1C charging rate



Discharge curves of single cell EH-100B16 at various discharge rates at room temperature.

